

MEETING & EVENT CAPACITY

room	dimensions	sq. ft.	ceiling	exhibits	rounds 10	rounds 8	reception	theater	classroom	board room	u-shape
Heritage	128'x88'	11,297	22'	70	720	560	1,130	1,204	470	270	323
<i>Heritage I</i>	41'x88'	3,566	22'	22	280	224	357	346	148	86	102
<i>Heritage II</i>	44'x88'	3,796	22'	22	290	232	380	371	158	91	109
<i>Heritage III</i>	51'x88'	3,934	22'	24	310	248	393	387	164	94	113
<i>Heritage I, II</i>	85'x88'	7,362	22'	48	420	336	736	767	306	177	211
<i>Heritage II, III</i>	95'x88'	7,730	22'	48	520	416	773	808	322	186	221
<i>Heritage Terrace</i>	–	1,333	–	–	80	64	133	–	–	–	–
<i>Heritage Foyer</i>	–	6,401	24'	4	–	–	620	–	–	–	–
<i>Stage</i>	–	2,136	18'	12	170	136	212	187	89	51	61
<i>Back Stage</i>	–	2,136	24'	–	–	–	–	–	–	–	–
Wachena	110'x50'	5,476	20'	34	300	240	548	558	228	130	157
<i>Wachena I</i>	37'x44'	1,643	20'	10	90	72	164	132	68	39	47
<i>Wachena II</i>	37'x50'	1,856	20'	10	90	72	186	156	77	45	53
<i>Wachena III</i>	37'x53'	1,979	20'	12	90	72	198	170	82	47	57
<i>Wachena I, II</i>	74'x47'	3,499	20'	20	180	144	350	338	146	84	100
<i>Wachena II, III</i>	74'x52'	3,835	20'	22	190	152	384	376	160	92	110
<i>Wachena Terrace</i>	–	1,717	20'	–	90	72	172	–	–	–	–
<i>Wachena Foyer</i>	–	520'	24'	1	–	–	52	–	–	–	–
Paipa	79'x33'	2,565	20'	14	140	112	257	235	107	62	73
<i>Paipa I</i>	40'x33'	1,290	20'	8	60	48	129	93	54	30	37
<i>Paipa II</i>	40'x33'	1,275	20'	8	60	48	128	92	53	30	36
<i>Paipa Foyer</i>	–	418	20'	2	–	–	42	36	–	–	–
<i>Upper Pre-Function</i>	–	4,056	–	4	–	–	–	–	–	–	–
<i>Restaurant Terrace</i>	–	1,907	–	–	–	–	–	–	–	–	–
<i>Cuaja</i>	22'x33'	804'	10'	4	60	48	80	69	30	19	18
<i>Cuaja Terrace</i>	–	843'	–	5	70	56	84	74	30	20	20
<i>Pool Deck</i>	–	17,300'	–	–	1,320	1,056	1,730	1,870	–	–	–
<i>Pool Lawn</i>	–	3,100'	–	–	250	200	310	294	–	–	–



MEETING & EVENT MAP

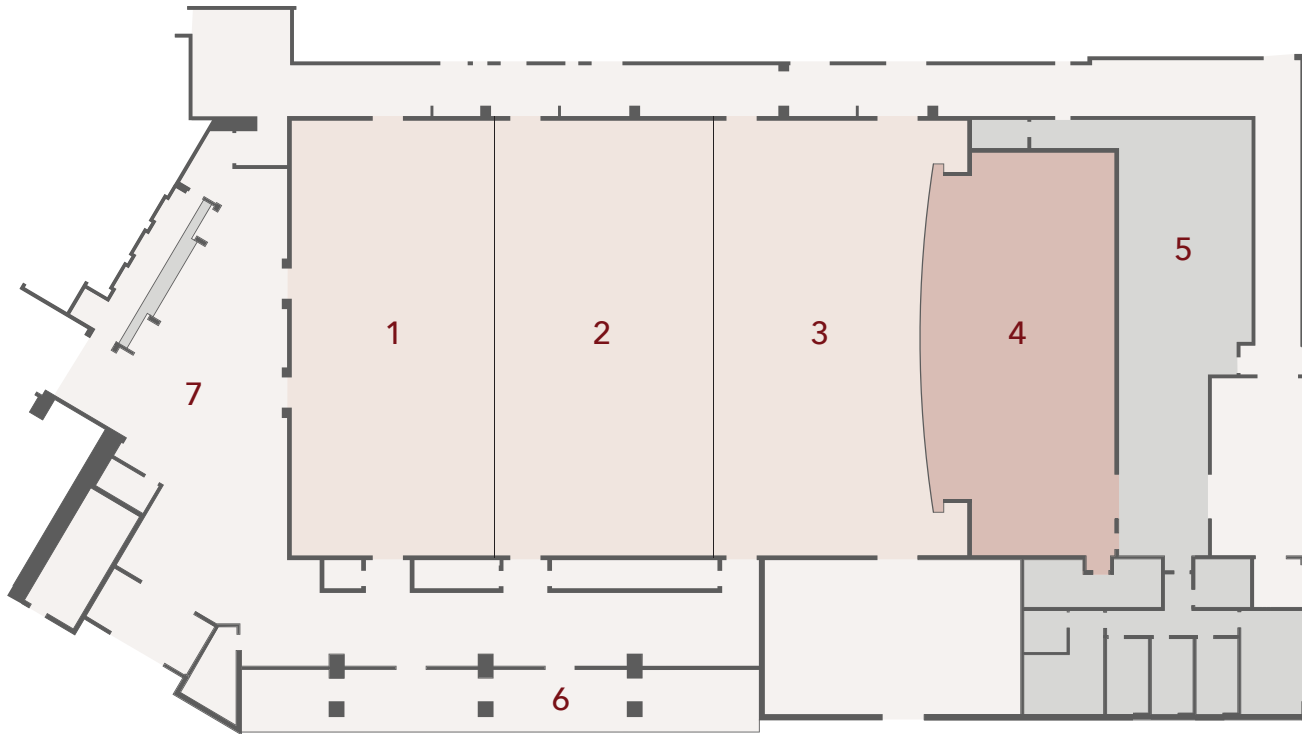


Heritage	A	Restaurant	G
Heritage Terrace	B	Restaurant Terrace	H
Wachena	C	Business Center	I
Wachena Terrace	D	Cuaja	J
Paipa	E	Cuaja Terrace	K
Upper Pre-Function	F	Pool	L

Sycuan

5469 Casino Way | El Cajon, CA 92019 | 619.659.3337 | groupsales@sycuan.com

HERITAGE

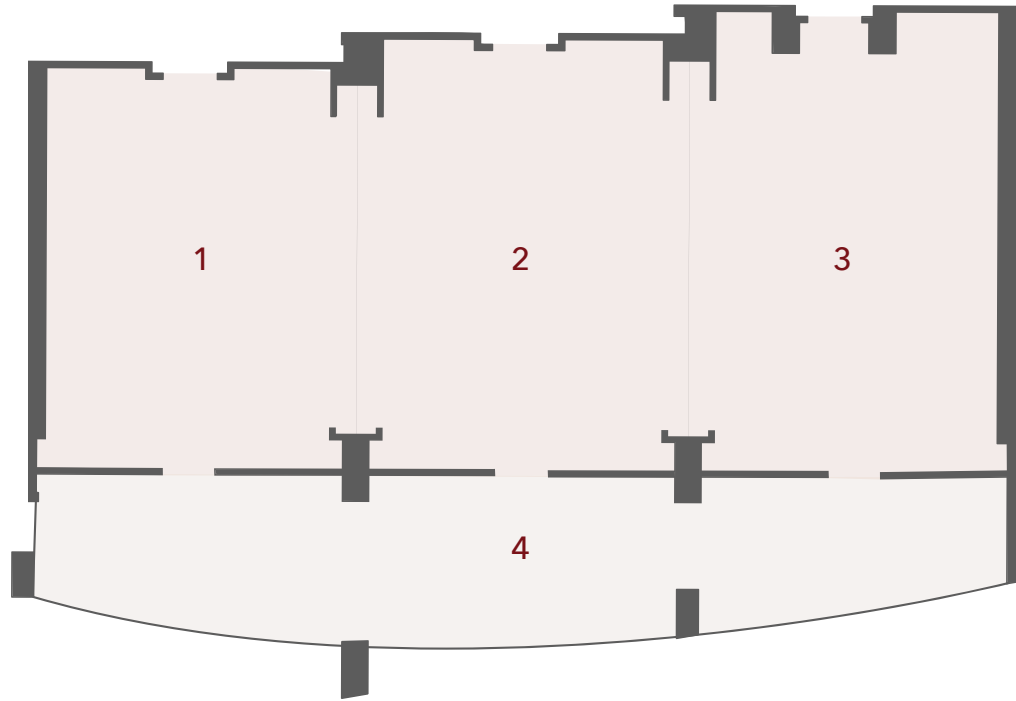


room	key	dimensions	sq ft	ceiling	exhibits	rounds 10	rounds 8	reception	theater	classroom	board room	u-shape
Heritage		128'x88'	11,297	22'	70	720	560	1,130	1,204	470	270	323
<i>Heritage I</i>	1	41'x88'	3,566	22'	22	280	224	357	346	148	86	102
<i>Heritage II</i>	2	44'x88'	3,796	22'	22	290	232	380	371	158	45	53
<i>Heritage III</i>	3	51'x88'	3,934	22'	24	310	248	393	387	164	91	109
<i>Heritage I, II</i>	-	85'x88'	7,362	22'	48	420	336	736	767	306	177	211
<i>Heritage I, II, III</i>	-	95'x88'	7,730	22'	48	520	416	773	808	322	186	221
<i>Stage</i>	4	-	2,136	18'	12	170	136	212	187	89	51	61
<i>Back Stage</i>	5	-	2,136	24'	-	-	-	-	-	-	-	-
<i>Heritage Terrace</i>	6	-	1,333	-	-	80	64	133	-	-	-	-
<i>Heritage Foyer</i>	7	-	6,401	24'	4	-	-	620	-	-	-	-

Sycuan

5469 Casino Way | El Cajon, CA 92019 | 619.659.3337 | groupsales@sycuan.com

WACHENA

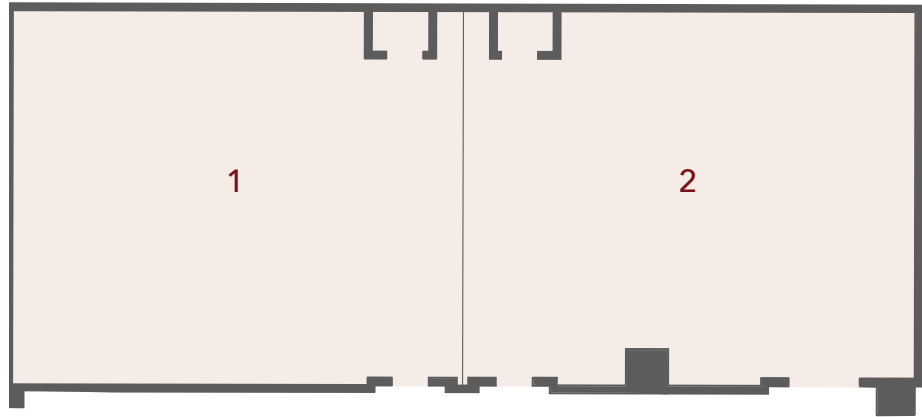


room	key	dimensions	sq ft	ceiling	exhibits	rounds 10	rounds 8	reception	theater	classroom	board room	u-shape
Wachena		110'x50'	5,476	20'	34	300	240	548	558	228	130	157
<i>Wachena I</i>	1	37'x44'	1,643	20'	10	90	72	164	132	68	39	47
<i>Wachena II</i>	2	37'x50'	1,856	20'	10	90	72	186	156	77	45	53
<i>Wachena III</i>	3	37'x53'	1,979	20'	12	90	72	198	170	82	47	57
<i>Wachena I, II</i>	–	74'x47'	3,499	20'	20	180	144	350	338	146	84	100
<i>Wachena II, III</i>	–	74'x52'	3,835	20'	22	190	152	384	376	160	92	110
<i>Wachena Terrace</i>	4	–	1,717	20'	–	90	72	172	–	–	–	–
<i>Wachena Foyer</i>	–	–	520'	24'	1	–	–	52	–	–	–	–

Sycuan

5469 Casino Way | El Cajon, CA 92019 | 619.659.3337 | groupsales@sycuan.com

PAIPA

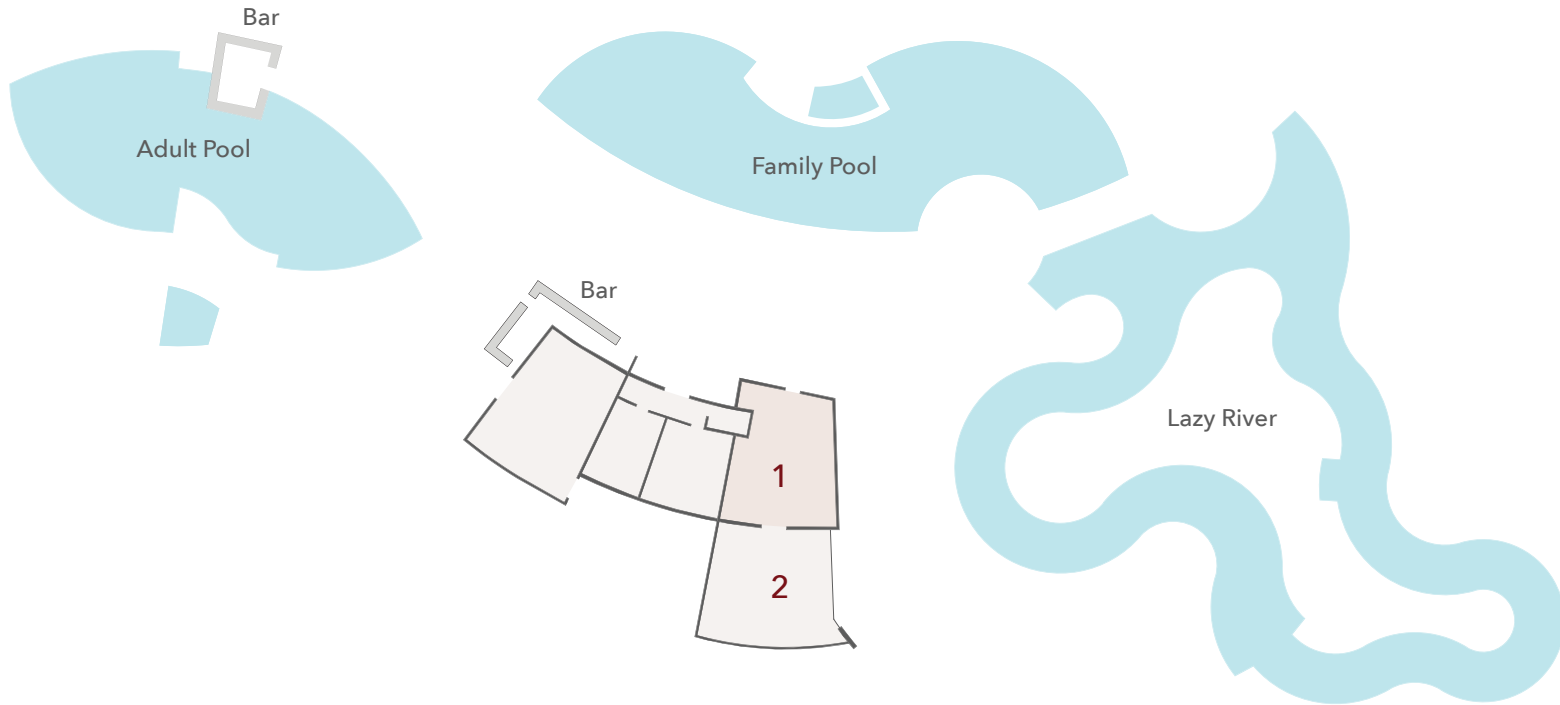


room	key	dimensions	sq. ft.	ceiling	exhibits	rounds 10	rounds 8	reception	theater	classroom	board room	u-shape
Paipa		79'x33'	2,565	20'	14	140	112	257	235	107	62	73
<i>Paipa I</i>	1	40'x33'	1,290	20'	8	60	48	129	93	54	30	37
<i>Paipa II</i>	2	40'x33'	1,275	20'	8	60	48	128	92	53	30	36
<i>Paipa Foyer</i>	-	-	418	20'	2	-	-	42	36	-	-	-

Sycuan

5469 Casino Way | El Cajon, CA 92019 | 619.659.3337 | groupsales@sycuan.com

CUAJA + POOLS

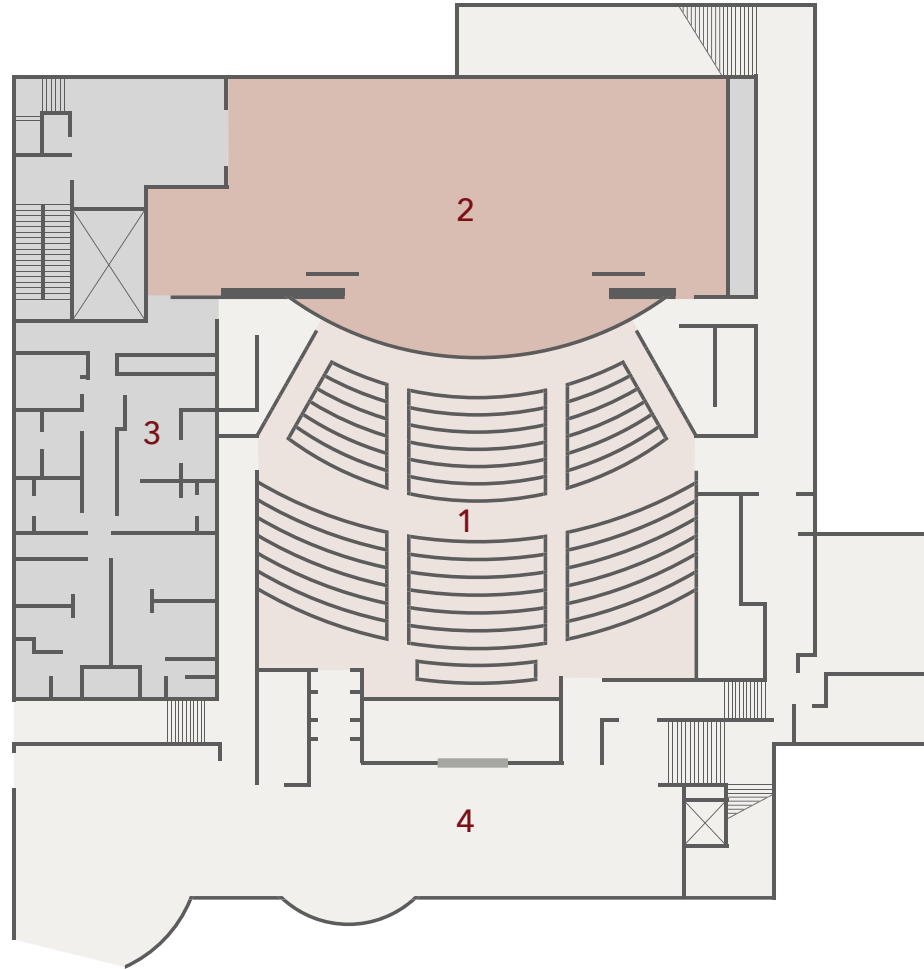


room	key	dimensions	sq. ft.	ceiling	exhibits	rounds 10	rounds 8	reception	theater	classroom	board room	u-shape
Cuaja	1	22'x33'	804	10'	4	60	48	80	69	30	19	18
<i>Cuaja Terrace</i>	2	40'x33'	843	-	5	70	56	84	74	30	20	20
<i>Pool Deck</i>	-	-	17,300	-	-	1,320	1,056	1,730	1,870	-	-	-
<i>Pool Lawn</i>	-	-	3,100	-	-	250	200	310	24	-	-	-

Sycuan

5469 Casino Way | El Cajon, CA 92019 | 619.659.3337 | groupsales@sycuan.com

LIVE & UP CLOSE



room	key	dimensions	sq ft	ceiling	exhibits	rounds 10	rounds 8	reception	theater	classroom	board room	u-shape
Live & Up Close		--	--	--	--	--	--	--	450	--	--	--
<i>Theater</i>	1	80'x56'	4,480	--	--	--	--	--	450	--	--	--
<i>Stage</i>	2	96'x48'	4,608	--	--	--	--	--	--	--	--	--
<i>Backstage</i>	3	36'x104'	3,744	--	--	--	--	--	--	--	--	--
<i>Theater Foyer</i>	4	98'x27'	2,046	--	--	--	--	--	--	--	--	--

